

T66



CANTILEVER BEAM LOAD CELL FOR HARSH INDUSTRIAL ENVIRONMENTS

capacities 5kg - 500kg



This fully welded stainless steel bending beam load cell is hermetically sealed to IP68 / IP69K and can be used in the harshest industrial environments. It is suitable for weighing platforms, bag fillers, belt weighers and tank weighing in the Food Processing, Chemical, Pharmaceutical and general Bulk Handling industries.

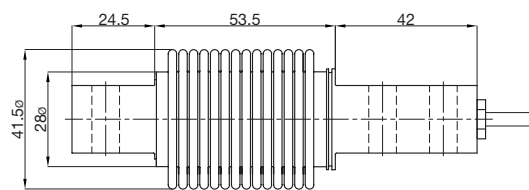
T66 load cells are available with intrinsically safe ATEX certification for all Gas and Dust zones. ATEX certification for Dust zones 20, 21 and 22 does not require safety barriers, saving substantial cost.

For applications in aggressive environments where stress corrosion or acid attack is an issue, a special parylene coating can be specified as an option. High temperature variants for operation in environments up to 150°C are also available.

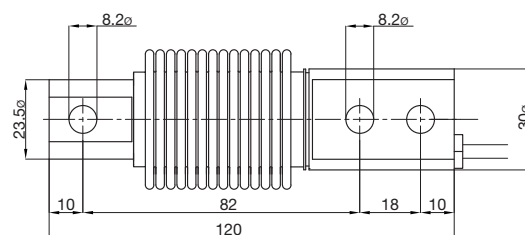
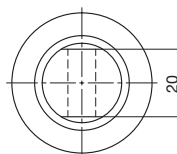
- Stainless steel load sensor
- Hermetically sealed, fully welded construction
- High durability PU cable
- Sealed to IP68 / IP69K
- 3000 divisions OIML R60 Class C
- 5 year warranty
- High Integrity cable entry
- 6 wire (with sense wires) option
- Available in high temperature version
- Available in  version



www.thames-side.com



All dimensions in mm



Model T66 ATEX Certification

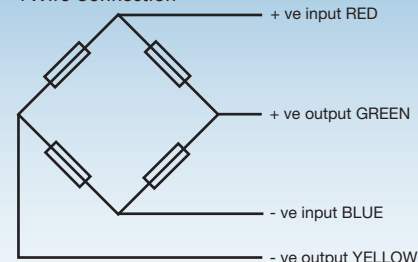
Code	Temperature Class	Parameters	Application
II 1 GD Ex ia III CT4..T6 Ga IP68T85°C Ex ia IIIC T135°CT85°C Da Ex ta IIIC T85°C Da	T4	Pi = 2.50W	Gas Zones 0, 1, 2 with safety barriers
	T5	Pi = 2.50W	Dust Zones 20, 21, 22 without safety barriers
	T6	Pi = 1.69W	

T66 Load Cell

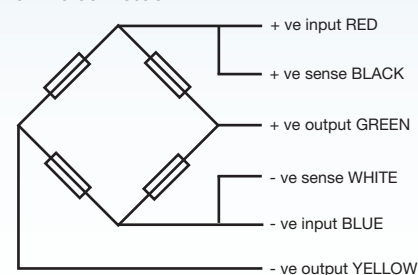
	Load cell specification	Units
Load Cell Capacities	5, 10, 20, 30, 50, 75, 100, 150, 200, 250, 300, 500	kg
Rated Output	2	mV/V ± 0.1%
Accuracy Class	3000	n.OIML
Combined Error	< ± 0.017	%*
Non-repeatability	< ± 0.015	%*
Creep (30 minutes)	< ± 0.016	%*
Temperature Effect on Zero Balance	< ± 0.002	%* / °C
Temperature Effect on Span	< ± 0.0012	%* / °C
Compensated Temperature Range	-10 to +40	°C
Operating Temperature Range	-20 to +70	°C
Safe Overload	200	%*
Ultimate Overload	300	%*
Zero Balance	< ± 1	%*
Input Resistance	400	Ω ± 20
Output Resistance	350	Ω ± 3
Insulation Resistance	> 5000	MΩ @ 100V
Recommended Supply Voltage	10	V
Maximum Supply Voltage	15	V
Environmental Protection	IP68 / IP69K	
Cable Length	3	m
Cable Material	Polyurethane	
Nominal Shipping Weight	0.5	kg

*With respect to rated output

4 Wire Connection



6 Wire Connection



Electrical Connections

Electrical Connections
Via 4 or 6 wire, 5.7mm diameter, screened polyurethane cable.

Screen not connected electrically to load cell.

Construction

Construction
Load cell manufactured from stainless steel.

Mounting Options

- Stainless steel baseplate
- Anti-Vibration assembly LA66
- LeverMount® Lite mounting accessory
- Tension Accessory LA66-TENSION

DISTRIBUTED BY:

THAMES SIDE SENSORS LTD

Unit 10, io Trade Centre, Deacon Way,
Reading, Berkshire RG30 6AZ

tel: +44 (0) 118 941 1387

fax: +44 (0) 118 941 2004

sales@thames-side.co.uk

www.thames-side.com

Issue: T66.02.16



Our policy is one of continuous product enhancement. We therefore reserve the right to incorporate technical modifications without prior notification.